

FIG. 105

TRANSFER PLATE ASSEMBLY

Size Range: Any double combination of sizes:
 "D1" Bottom Group 7 Clamp 2" through 3 1/2" diameter.
 "D2" Top Group 6 Clamp 1/4" through 2" diameter.

Hardwared

Material: Carbon Steel; 304 Stainless; 316 Stainless.

Finish: Plain carbon; electro-zinc plated carbon; 304 or 316 mill finish; 304 or 316 electro-polished.

Plastic Inserts: Polypropylene (color blue) up to 212° F.
 Santoprene (color tan) up to 302° F.

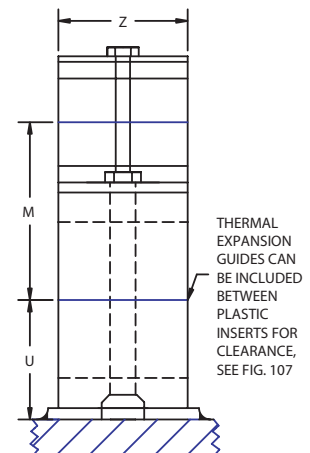
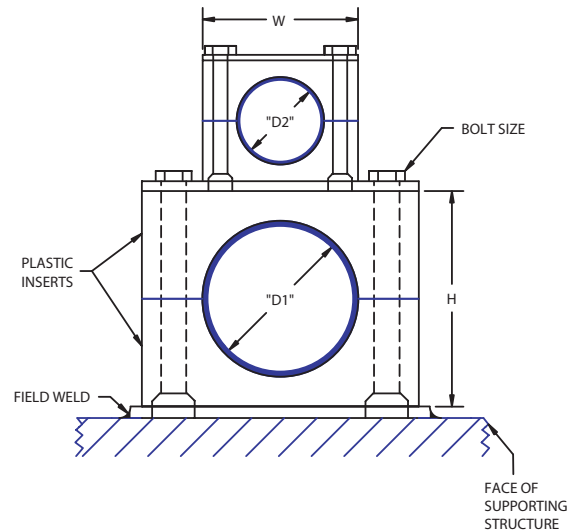
Installation: Weld Group 7 bottom plate to structure or supporting member. Let Cool before mounting plastic inserts.

Ordering: Specify figure number, any allowable combination of sizes (see chart for allowable bottom and top size), hardware material, finish and plastic insert material.



PIPE & TUBE SUPPORT

TUBE OR PIPE SIZE	"D1" + "D2"	"D" INCHES	GROUP NO.	INCHES					BOLT SIZE
				W	Z	M	U	H	
1/4 T	"D2" Top Clamp Dia. Must fall within these sizes	.250	6	3.34	1.19	3.63	2.31	4.38	1/4 - 20
3/8 T		.375							
1/2 T		.500							
5/8 T		.625							
3/4 T		.750							
1/2 P		.840							
7/8 T		.875							
1 T		1.000							
3/4 P		1.050							
1-1/4 T		1.250							
1 P		1.315							
1-1/2 T		1.500							
1-1/4 P		1.660							
1-1/2 P		1.900							
2 T		2.000							
2 T		"D1" Bottom Clamp Dia. Must fall within these sizes							
2 P	2.375								
2-1/2 T	2.500								
2-1/2 P	2.875								
3 T	3.000								
3-1/2 T - 3P	3.500								



Contact our inside sales team for unique stacking arrangements